

**Richply**





# ULTRAFORM

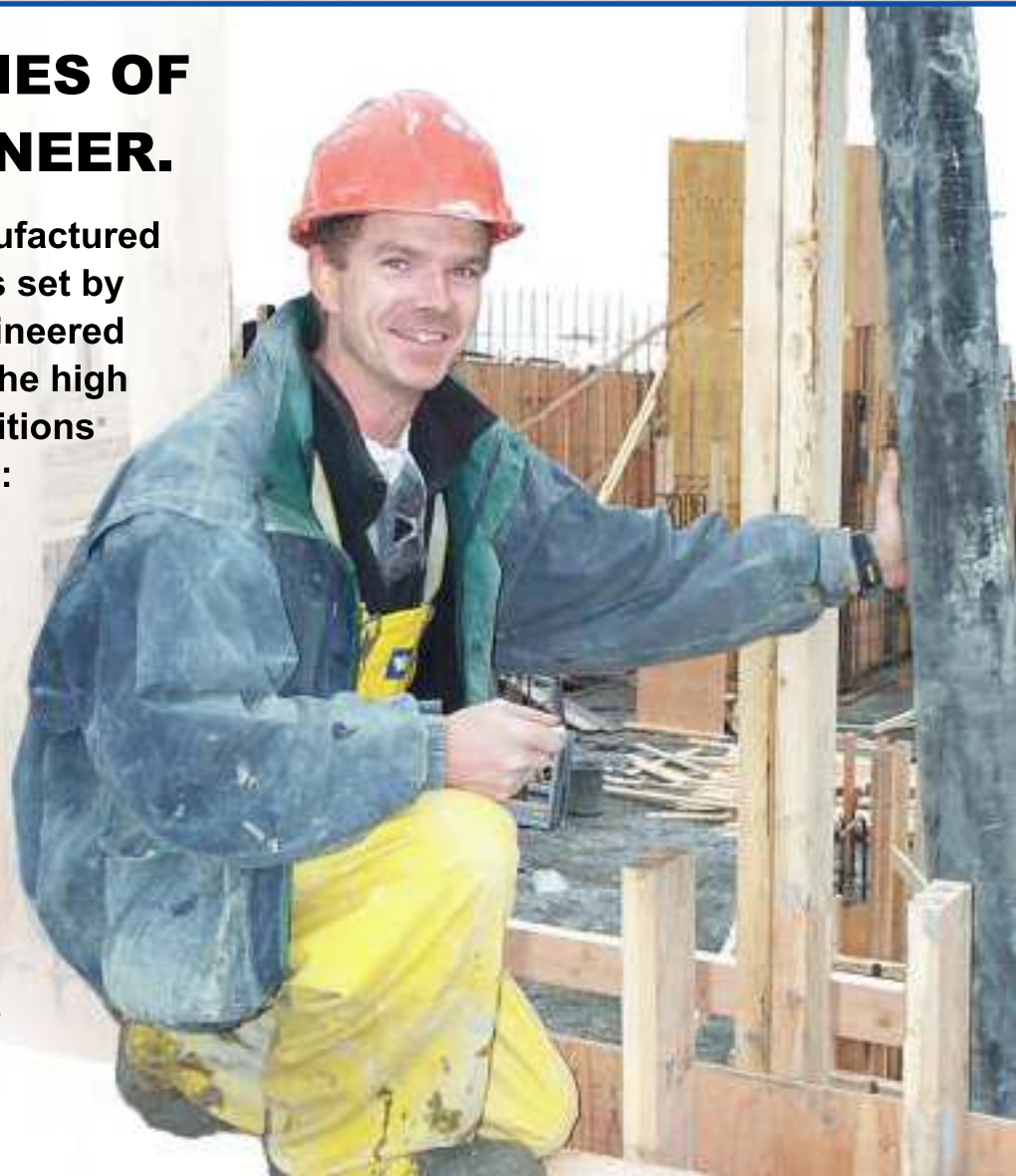
**THE ULTIMATE CONCRETE FORM PANEL.**



## **MADE FROM 7 PLYS OF DOUGLAS FIR VENEER.**

**ULTRAFORM panels are manufactured to meet the highest standards set by industry. ULTRAFORM is engineered for premium performance in the high loading and wet service conditions required for concrete forming:**

-  Made with 7 plies of premium, high strength, Douglas Fir veneer (17.5 and 19 mm).
-  Strictest limits on the thickness of face and inner plies. Resin impregnated overlay on face side of panel.
-  50% greater load carrying capacity than comparable thicknesses of regular Douglas Fir Plywood.
-  Cross-laminated veneers make the panels split-proof from nailing, tough, durable and reusable.



# ULTRAFORM

**THE ULTIMATE CONCRETE FORM PANEL.**



ULTRAFORM is manufactured under the accredited ISO Guide 65 quality assurance program of APA - Engineered Wood Association.

ULTRAFORM is the only product bearing the COFI FORM SP PLUS mark - the most stringent CANPLY specification for the concrete form industry.

ULTRAFORM is made with 100% Douglas Fir veneers - face, back AND core - for uncompromising performance and durability

Dependable design data for Canadian industry is published in CANPLY's Concrete Formwork brochure. **Nothing beats ULTRAFORM.**

## OVERLAID PLYWOOD SPAN TABLE

Minimum Width of Support	Centre to Centre Span	Permissible Concrete Pressures kN/m <sup>2</sup> for given Thickness and Deflection Limitation					
		17.5mm 1/180	19mm 1/180	17.5mm 1/270	19mm 1/270	17.5mm 1/360	19mm 1/360
38	100	216	227	216	227	216	227
	150	119	126	119	126	119	126
	200	83	87	83	87	83	87
	400	35	39	32	39	24	29
	600	16	18	11	13	8.2	10
	800	7.3	9.1	4.9	6.1	3.7	4.5



Richmond Plywood Corporation Ltd.

**"High Quality  
Plywood Products  
since 1956"**

**Distributed by:**